

**1.0 Rules**

Racing will take place under the current Racing Rules of Sailing (RRS), the Prescriptions of the RYA, the Notice of Race, and these Sailing Instructions. If there is conflict between the Notice of Race and the Sailing Instructions, then these Sailing Instructions shall prevail.

**2.0 Notices to competitors**

Notices to competitors will be posted on the official notice boards or on the white board located in the wet bar.

**3.0 Changes to Sailing Instructions**

Any change to the sailing instructions will be posted before 1000 on the day it will take effect, except that any change to the schedule of races will be posted by 2000 on the day before it will take effect.

**4.0 Signals made ashore**

- 4.1 Signals made ashore will be displayed on the flag staff located at the South end of the clubhouse.
- 4.2 When flag AP is displayed ashore, "1 minute" is replaced by "not less than 20 minutes".

**5.0 Schedule of races**

- 5.1 Spring Series every Sunday between April 4<sup>th</sup> and June 27<sup>th</sup> inclusive.  
Summer Series every Sunday between July 11<sup>th</sup> and September 5<sup>th</sup> inclusive  
Autumn Series every Sunday between September 19<sup>th</sup> and December 19<sup>th</sup> inclusive  
Winter Series every Sunday between January 2<sup>nd</sup> and a date in March to be confirmed.
- 5.2 It is intended that 2 races will be sailed on each day, 2 back to back but the Race Committee may in its absolute discretion sail fewer or more races on any day.
- 5.3 The scheduled time of the warning signal for the first race on each day will be not before 10:20 hrs.

**6.0 Starts/Class/Start Flags/Number of Laps**

- 6.1 The starts, classes, course to be sailed, start flags and number of laps are set out in appendix 1.
- 6.2 The Race Committee may allocate any other class to a particular start.

**7.0 The courses**

Appendix 2 describes the courses.

**8.0 Marks**

- 8.1 Course marks 1, 2 and 3 will be either blue cylindrical buoys or orange cylindrical buoys.
- 8.2 The outer start and finishing marks will be upright bright orange pillar buoys without a flag.
- 8.3 The approximate positions of the marks and the start/finishing lines are illustrated in appendix 3.

**9.0 Spare**

**10.0 The start**

- 10.1 Races will be started by using rule 26.
- 10.2 The starting line will be between a staff bearing a yellow flag on the starting vessel and the outer starting line mark.
- 10.3 Spare
- 10.4 If there is a general recall during a sequence of starts, the recalled division may be

restarted at any point in the start sequence. Flag First Substitute will be lowered at least 1 minute before the next start without a sound signal. This changes Rule 29.2. and Race Signals.

10.5 A boat starting later than four minutes after her starting signal may be scored "Did Not Start" without a hearing. This changes rules A4 & A5.

10.6 A boat whose warning signal has not been made shall keep clear of the starting area. breach of this instruction may lead to disqualification.

## **11.0 Spare**

### **12.0 The finish**

12.1 The finishing line will be between a staff displaying a blue flag aboard the finishing vessel and the outer finishing mark.

12.2 The leeward rounding mark shall be a mark of the course on all laps including the last lap before finishing.

12.3 Spare.

12.4 When a race committee boat, that is positioned as one end of the intended full-race finishing line, displays flag S (with two sound signals) as the leading boat is approaching the leeward rounding mark, the course is shortened and boats shall leave the rounding mark on its required side and finish on the intended full-race finish line. This changes rule 32 and flag S in Race Signals.

### **13.0 Penalty system**

13.1 For boats in the Catamaran Start 1 rule 44.1 is changed so that only a one turn penalty is required.

13.2 As provided in rule 67, the protest committee may, without a hearing, penalise a boat that has broken rule 42.

### **14.0 Time limits**

14.1 If no boat of a start has passed Mark 1 within 30 minutes of its starting signal the race for that start may be abandoned.

14.2 Boats failing to finish within 20 minutes after the first boat in their respective class may be scored Did Not Finish. This changes rule 35.

### **15.0 Protests and requests for redress**

15.1 Protest forms are available from the race office. Protests shall be delivered there within the protest time limit.

15.2 For all starts, the protest time limit is 60 minutes after the last boat has finished (i) the second of the 2 back to back races or (ii) the third race, as appropriate. The same time limit applies to protests by the race committee and protest committee about incidents they observe in the racing area and to requests for redress.

15.3 Notices will be posted within 30 minutes of the protest time limit to inform competitors of hearings in which they are parties or names as witnesses.

15.4 Notices of protests by the race committee or protest committee will be posted to inform boats under rule 61.1(b).

15.5 Breaches of instructions 10.6, 17, and 21, will not be grounds for a protest by a boat. This changes rule 61(a). Penalties for these breaches may be less than disqualification if the protest committee so decides.

15.6 With the agreement of the parties, a mediation hearing may be conducted for all protests lodged in accordance with rule 61 which allege an infringement of a rule of Part 2 or 4. Such hearings will be held after the protest has been lodged and prior to the protest hearing. Mediation when used shall be conducted in accordance with Appendix 4.

### **16.0 Scoring**

16.1 The scoring system is as laid out in Appendix A9 Race Scores in a Series longer than a Regatta

16.2 8 races are required to be completed to constitute a series.

16.3 Each boat's series score shall be the total of her race scores excluding the worst 50% -1.

16.4 Members of Datchet Water Sailing Club who undertake a club duty will be awarded average points of all races they started for the race or races they missed because of the

- club duty. This will be indicated by scoring code OOD in the published results.
- 16.5 Points for race ties will not be divided. This changes Appendix A7.
- 16.6 The RYA Portsmouth Yardstick Scheme and Portsmouth Numbers as set out in the current YR2 will normally be used.
- 16.7 For catamarans, the ISAF Small Catamaran Handicap Rating System (SCHRS) will be used. The values will normally be as published on the ISAF SCHRS web site ([www.schrs.com](http://www.schrs.com)).
- 16.8 The race committee may, in their absolute discretion:
- Vary any handicap rating;
  - Allocate a rating to any class not listed in YR2 or SCHR system.
- 16.9 Competitors sailing multi-hulled boats in start 1 shall declare the SCHRS value under which they propose to race on the race declaration form on each day of racing.
- 16.10 Members of Datchet Water Sailing Club who are competing in sailing events advertised on their relevant class association web-site which makes it impossible for them to sail in a race at DWSC may claim average points for that race/days races by following the procedures laid out in Appendix 4. Failure to follow the procedures exactly and completely will mean that no average points are awarded.

### **17.0 Safety regulations**

- 17.1 All boats shall give way to patrol boats and race management craft at all times.
- 17.2 A boat shall not interfere with nor try to pass between a patrol boat and a boat that is capsized or otherwise needing assistance or persons in the water. Sailors racing and contravening this requirement may be disqualified without a hearing. This changes rule Rule 63.1.
- 17.3 All competitors must wear adequate personal flotation devices at all times while racing. Neither a wetsuit nor a drysuit constitute adequate personal flotation devices. In addition wetsuits or drysuits shall be worn by all competitors while racing between 1st November and 30th April. This changes Rule 40.
- 17.4 Competitors shall at all times comply with the safety regulations which are the same as those for all sailors, are posted permanently on the club sailing notice board and are deemed to be incorporated herein.

### **18.0 Spare**

### **19.0 Equipment Inspection or measurement checks**

A boat or equipment may be inspected at any time for compliance with the class rules and sailing instructions. On the water, a boat can be instructed by a race committee measurer to proceed immediately to a designated area for inspection.

### **20.0 Official boats**

Official boats will not be marked.

### **21.0 Radio communication**

A boat shall neither make radio transmissions while racing nor receive radio communications not available to all boats. This restriction also applies to mobile phones.

### **22.0 Prizes**

Prizes will be awarded as set out in the Notice of Race.

### **23. Responsibility and Disclaimer**

- 23.1 A boat is entirely responsible for her own safety, whether afloat or ashore, and nothing, whether in the Notice of Race or Sailing Instructions or anywhere else, reduces this responsibility.
- 23.2 It is for the boat to decide whether she is fit to sail in the conditions in which she will find herself. By launching or going afloat, the boat confirms that she is fit for those conditions and her crew is competent to sail and compete in them.
- 23.3 The boat is required to hold adequate insurance and in particular to hold insurance against third party claims in the sum of at least £2,000,000.
- 23.4 Nothing done by the organisers can reduce the responsibility of the boat nor will it make

the organisers responsible for any loss, damage, death or personal injury, however it may have occurred, as a result of the boat taking part in the racing. The organisers encompass everyone helping to run the race and the event, and include the organising authority, the race committee, the race officer, patrol boats and beachmasters.

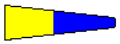
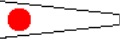




23.5

The provision of patrol boats does not relieve the boat of her responsibilities.

23.6

The fact that the race committee conducts inspections of a boat does not reduce the responsibilities of the boat set out in this paragraph.

## Sailing Instructions Appendix 1

Start	Class Start	Courses	Remarks	Start Flag		No of	
				Numeral		Laps	
1	Catamaran	e.g. F18, Stealth, FX1, Tornado, Dragoons, Hurricane, Hobie 16	T & S	1,2,3,1,3,1,2,3, finish	5		3
			1 <sup>st</sup> Race each day				1, 3,1,3,1, 3, 1,3, finish
2	Laser	Laser 1 Radial 4.7	T & S	1,2,3,1,3 1, 2, 3, finish	1		3
3	Flying Fifteen		T & S	1,2,3,1,3,1,2, 3, finish	2		3
4	Fast Handicap	Dinghy's with a PY less than 1099 and a symmetric spinnaker or no spinnaker (e.g. Wayfarer & Contender)	T & S	1,2,3,1,3,1,2, 3, finish	3		3
4	Asymmetric	Asymmetric spinnaker Dinghy's with a PY less than 1099 (e.g. RS 500, RS 400, RS 200, RS 700, RS 800, 49er, Laser 2000)	S	1,3,1,3,1,3 finish	4		3
5	Youth	Youth sailors and Dinghies with a PY greater than 1099	T	1,2,3,1,2,3 finish	6		2

} \*

\* Fast Handicap and Asymmetric Fleets normally start together but sail different courses.

## Sailing Instructions Appendix 2

### The Courses

Unless indicated on the official notice board, the course configuration and order of rounding marks will be one of the following:

- When a RED flag is flown on committee boat leave marks to PORT and mark 2 will be in the position indicated “2a” in Appendix 3.
- When a GREEN flag is flown on committee boat leave marks to STARBOARD and mark 2 will be in the position indicated “2b” in Appendix 3.

The courses will normally use permanently placed inflatable blue and orange buoys:

- When an ORANGE TRIANGULAR flag is flown the three orange buoys will define the course.
- When a BLUE TRIANGULAR flag is flown the three blue buoys will define the course.

If alternative marks are to be used neither triangular flag will be flown and details of the course will be displayed on the whiteboards in the clubhouse and/or on the rear of the committee boat.

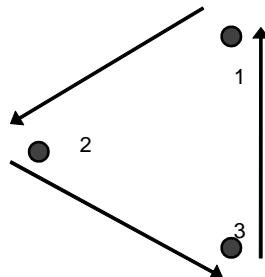
Of the three marks selected, mark 1 will always be the buoy furthest to windward of the committee boat and mark 3 will be the buoy nearest to the committee boat.

The diagrams below indicate the number of legs required to complete particular rounds. They do not indicate the angles between legs.

#### 1. Standard Course (marks to port).

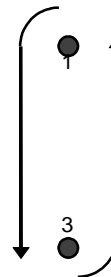
A lap is either a triangle or a sausage, i.e. 3 laps will be triangle, sausage and a triangle

First and subsequent odd rounds (3 legs)



Round Mark 1  
Round Mark 2  
Round Mark 3

Start/Finish Area



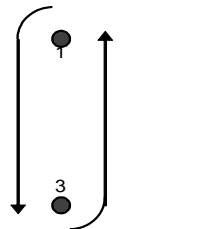
Second and subsequent even rounds (2 legs)

Round Mark 1  
Round Mark 3

#### 2. Windward/Leeward

All rounds (2 legs)

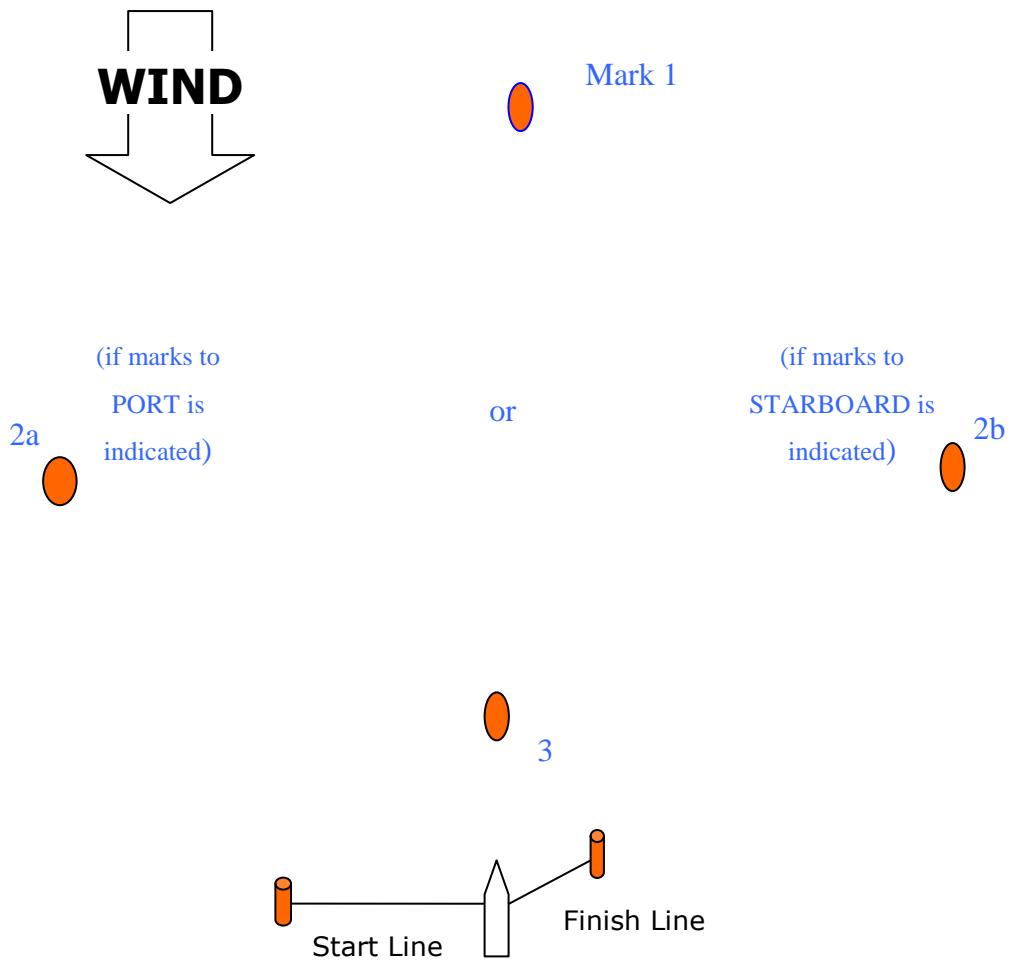
Round Mark 1  
Round Mark 3



Start/Finish Area

### Sailing Instructions Appendix 3:

Approximate position of Marks



*Shown is port hand and Starboard hand courses.*

*Beware that on a Starboard course the Start & finish line will swap sides.*

*Safety Coxswain will set start/finish line*

## Appendix 4

### Average Points

Datchet Water Sailing Club Members who are representing DWSC at a sailing event advertised on their relevant Class Association (the class association of the boat they are competing with at DWSC) calendar, may claim average points towards the relevant DWSC series provided that:

1. They are the helm of both the boat at the event and the helm of the boat at DWSC.
2. By sailing in the event, sailing at DWSC was made impossible.
3. At least 8 races have been sailed at DWSC (in the relevant series).
4. No more than 20% of race results in the DWSC series are made up of average points (i.e. if a competitor has sailed 20 races at DWSC he can claim up to a further 5 races as average points if attending events away from DWSC).
5. All relevant paper work required to claim average results is provided and filed in the relevant manner by the helm claiming average points (the emphasis is entirely on the helm to provide this paper work any failure to do so will completely negate any claim for average points).
6. A copy of the "Average Points Claim Form" has been completed.
7. A copy of the results sheet from the event has been attached to the claim form
8. A copy of the Class Association Event Calendar (showing the event) is attached to the claim form.
9. The claim form is filed with the relevant attachments within one month of the event.
10. The DWSC racing series still has at least two weekends of scheduled racing left when the claim form is submitted (this means average points cannot be claimed during the last two weekends of any DWSC series)

Claim forms can be found in the back of the "Average Points File" located on the shelf immediately inside the club office. All completed claims should be filed in the front of the same file.

Revised June 2010